

MASTIC[®]
by  **Ply Gem**



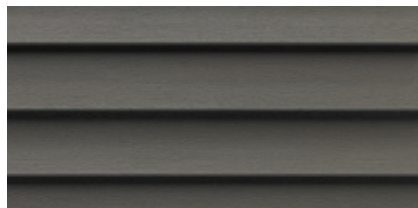
QUEST[®]
PREMIUM VINYL SIDING

MAKE MORE POSSIBLE.



This page: Quest® Double 4" in English Wedgewood with Cedar Discovery® Half Round in Everest & White

Cover Image: Quest® Double 4" in Woodland Green with Cedar Discovery® Hand-Split Shake in Walnut





QUEST® PREMIUM VINYL SIDING

Quest® premium vinyl siding includes a tornado-tough, double-thick nail hem design to hold tight in the highest winds. It is virtually maintenance-free and beautiful season after season. And it's available in long lengths for fewer seams and a flawless look, even on larger homes.



QUEST PROFILES



D4 & D4^L

**DOUBLE 4" &
DOUBLE 4" LONG LENGTH**
Traditional Lap

DL & DL^L

**DOUBLE 4-1/2" &
DOUBLE 4-1/2" LONG LENGTH**
Dutch Lap

D5

DOUBLE 5"
Traditional Lap

QUEST COLOR KEY

LIGHT COLORS	D4	D4 ^L	DL	DL ^L	D5
Almond	●		●		●
Cameo	●		●		●
Classic Cream	●	●	●	●	●
Colonial Yellow	●		●		●
Desert Sand	●	●	●	●	●
Linen	●	●	●	●	●
Sage	●		●		●
Sandtone	●	●	●	●	●
Silver Grey	●	●	●	●	●
Tuscan Olive	●	●	●		●
Victorian Grey	●	●	●	●	●
Wicker	●	●	●	●	●
White	●	●	●	●	●

CLASSIC COLORS	D4	D4 ^L	DL	DL ^L	D5
Corn Silk	●		●		●
Everest	●	●	●	●	●
Harbor Grey	●	●	●	●	●
Pebblestone Clay	●	●	●	●	●
Scottish Thistle	●	●	●	●	●

PREMIUM CEDAR COLORS	D4	D4 ^L	DL	DL ^L	D5
American Walnut	●		●		
Cape Cod Grey	●		●		
Glacier Blue	●		●		
Natural Cedar	●		●		
Timberstone	●		●		
Woodland Green	●		●		●

PREMIUM DEEP COLORS	D4	D4 ^L	DL	DL ^L	D5
Autumn Harvest	●		●		
Deep Granite	●	●	●	●	●
English Wedgewood	●	●	●	●	●
Lakeshore Fern	●		●		
Misty Shadow	●	●	●	●	
Montana Suede	●	●	●	●	
Portsmouth Blue	●		●		
Quiet Willow	●	●	●	●	●
Rugged Canyon	●	●	●	●	●
Russet Red	●		●		

Due to printing limitations, colors may not be exactly as shown. Refer to actual sample and color chips for best match.

WORRY-FREE

SOLID AND STURDY. THAT'S QUEST® VINYL SIDING.

A tornado-tough, double-thick nail hem that keeps siding firmly in position, even during high winds. Patented T3-LOK® panel locking system eases installation and increases strength.



TRI-LINEAR RIGIDITY®

Quest provides extra rigidity in three critical areas. Siding panels stay straight and true with 200% more rigidity than standard siding.



TORNADO TOUGH, DOUBLE-THICK NAIL HEM

Fold-over nail hem features a projected stop and provides a stronger anchoring surface. Quest siding stays firmly in place, even in high winds.



ENHANCED FULL 3/4" PANEL PROJECTION

Oversized to provide extra rigidity and uniquely angled to create straighter, deeper shadow lines.



PATENTED T3-LOK®

Panels grip together for fast, easy installation and a uniquely designed lock tightens under pressure to keep siding in place during even the most challenging weather.



PREMIUM .046" NOMINAL THICKNESS

Superior thickness and impact resistance



WIND VELOCITY — RATED UP TO 170 MPH*



Standard Wind Load Design Pressure (DP) of 64 PSF** and can resist a Wind Velocity of up to 170 mph



LONGER LENGTH AVAILABLE

Longer lengths of 16' 8" is available in Double 4" and Double 4-1/2" Dutch Lap for fewer seams and a cleaner, straighter more professional look



EXCLUSIVE HANG-TOUGH™ TECHNOLOGY

Boosts durability so panels are more resistant to cracking, impact and thermal distortion. Color resides throughout the panel — virtually eliminating the appearance of nicks and minor surface scratches



KYNAR 500® PROTECTION

Our cedar colors feature an exclusive thermal bonding process to create a protective coating with superior weatherability and color retention



DURANYL® 5000 PROTECTION SYSTEM

Protects our premium colors against harsh elements and maximizes long-term weatherability



SUSTAINABLE

Crafted of readily available natural materials — our vinyl siding is safe, sustainable and recyclable



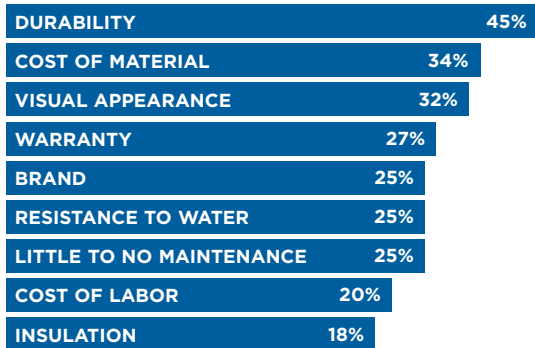
CLASS 1(A) FIRE RATING

*Tested in accordance with ATM D5206. Wind velocity rating will vary depending on specific code region and construction method. Refer to local building codes.

** Example wind velocity for 64 PSF is 170 mph Zone B at 30' building height.

VINYL SIDING DELIVERS WHAT HOMEOWNERS WANT.

MOST IMPORTANT FACTORS IN SIDING MATERIAL ACCORDING TO HOMEOWNERS:



Source: Ply Gem primary research, December 2020



DURABILITY

If you're looking for siding that is durable, low maintenance and looks beautiful, Quest® siding is the ideal choice. Quest will enhance your home's appearance today — and for years to come.



COLOR AND TEXTURE

Featuring a realistic cedar grain, Quest is available in a diverse palette of attractive colors — 34 base colors from rich, deep hues to light neutrals. Revolutionary technologies like Ply Gem's exclusive Hang-Tough™ Technology, Kynar 500® Protection and Duranyl® 5000 Protection System maximize the panel's weatherability and deliver additional protection — and peace of mind — for your investment.



LIFETIME WARRANTY

Quest vinyl siding is backed by our V.I.P. Limited Lifetime Warranty, which covers against manufacturing defects, excessive fading and hail damage for as long as you own your home. To protect your investment, the warranty is transferable in the event you sell your home (see warranty for details).



THIRD-PARTY TESTED FOR QUALITY

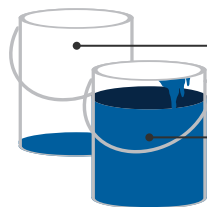
Mastic vinyl siding products are certified through the Vinyl Siding Institute (VSI), which sponsors third-party certification to ensure vinyl siding quality. Mastic vinyl siding meets or exceeds ASTM D3679 performance standards for impact resistance, weatherability, product thickness and performance in extreme conditions — all requirements in the VSI certification program.*

Consult the VSI website at vinylsiding.org for a current list of certified products and colors.



NEVER NEEDS PAINTING OR STAINING

Unlike wood, stucco or fiber cement, Quest vinyl siding never needs painting or staining, which saves you time and money year after year.



COMPARE MAINTENANCE COSTS

Quest: \$5
(just soap and water)

Other cladding options: up to \$6,000
(Based on typical prep, caulking and repainting of the average home)

WE TEST OUR VINYL SIDING RIGOROUSLY & RELENTLESSLY.

OIL CAN TEST

Siding panels are placed under heat strips and saturated to 120° – 140°F to make sure the siding doesn't warp or buckle.

WEATHERING

Color retention (resistance to fading) is tested by subjecting Mastic products to real-time weather conditions and accelerated UV testing. This ensures that Mastic products will hold up in the most extreme environmental conditions.

RIGIDITY

Panels are designed and engineered to be more rigid so the siding remains straight on the wall.

COLOR READ TEST

Using a spherical spectrophotometer, a 10,000-watt xenon flash tube bounces light off a siding panel. This information is then analyzed to determine if the color falls within accepted ranges for color consistency and match.

VERTICAL HEIGHT IMPACT TEST

Measures the product's durability and ability to resist impact forces — the result of proper thickness, formulation and impact modifiers.

GLOSS TEST

A digital readout microgloss meter is used to scan siding to determine if its gloss falls within a target range. Gloss is important to the aesthetic appeal of the siding.

A HEALTHY HOME STARTS WITH THE BASICS

You want the best health for your family — and that starts at home. We offer a full line of coordinating accessories so your home can be healthy from the outside in.



WHY DOES VENTILATION MATTER?

Vents protect your home from heat and moisture buildup and keep fresh air moving. Sturdy and well-built, Ply Gem vents are specially engineered to deter insects, birds and other animals. They're easy to install on all types of siding and come in hundreds of colors and a variety of designer styles. Best of all, Ply Gem vents are constructed of high-performance, long-lasting vinyl for a lifetime of low maintenance.



UTILITY VENTS

Sturdy utility vents provide excellent cross-ventilation of garages, foundations and range hoods. The louvered exhaust vent is ideal for removing the moist air of dryers and bathrooms. Intake louvers and soffit intakes work in tandem with vents to maximize the flow of air, allowing your family to breathe easier. With our utility vents, a home not only looks beautiful, but feels fresher.



GABLE VENTS

Typically installed at the peak of a roof, gable vents encourage proper airflow in your attic. Ply Gem gable vents allow maximum ventilation and feature a special snap-on system for easy installation and cleaning. Whether you choose to have your gable vents blend in with your siding or stand out as a decorative accent, you'll find a variety of stylish options.



VENTURA® HIDDEN VENT SOFFIT

Sculpted in clean lines and smooth surfaces, Ventura Hidden Vent Soffit features a contemporary, long clear span design. It allows 50% more airflow, reducing utility bills and preventing mold and mildew damage.

Mastic by Ply Gem is part of the Ply Gem portfolio of brands and product lines, delivering the industry's most comprehensive line-up of designed exterior solutions—all meant to work together seamlessly to elevate curb appeal and provide enduring beauty to homes.



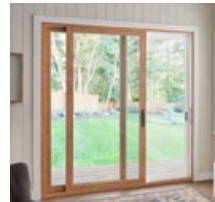
PART OF THE **Ply Gem[®]** PORTFOLIO OF TOTAL DESIGNED EXTERIORS



SIDING



WINDOWS



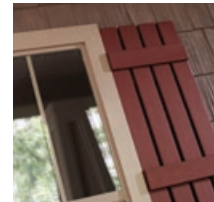
**PATIO
DOORS**



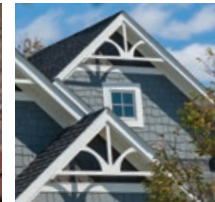
**STONE
VENEER**



**FENCE &
RAILING**



SHUTTERS



TRIM



METAL



ACCESSORIES



VISUALIZE YOUR TRANSFORMATION

Are you ready to see what's possible for your home? With our Ply Gem® Home Design Visualizer tool, it's easy to begin designing your dream home. Bring your vision to life at mastic.com/visualizer.

GET STARTED

Simply snap a photo and go, or jump-start your imagination with some of our sample homes.

ADD COLOR + VISUALIZE

Explore expert insights on color and accents that will broaden your perspective on what's possible with your home exterior renovation.

MASTIC[®]

by  Ply Gem

MAKE MORE POSSIBLE.

Mastic by Ply Gem is backed by the resources and reach of Cornerstone Building Brands, the nation's largest manufacturer of exterior building products, and supported by a team of dedicated professionals who provide an unrivaled level of experience and expertise to our nationwide network of distributors.



We reserve the right to alter, modify or delete items from time to time without notice. Due to printing limitations, colors may not be exactly as shown. Contact your distributor or sales representative for actual product and color samples.



MASTIC.COM | 800-962-6973
5020 Weston Parkway, Cary, NC 27513

© 2024 Mastic Home Exteriors Inc, part of **Cornerstone Building Brands, Inc.**
ALL RIGHTS RESERVED. 7601094141101/RevF/MS/IMG/0824



PART OF THE CORNERSTONE BUILDING BRANDS FAMILY | SIDING | WINDOWS + DOORS | SHUTTERS | METAL, TRIM + ACCESSORIES | STONE VENEER | FENCE + RAILING